



# FYREHALT EVOLUTION

## FIRE+SMOKE CONCERTINA CURTAIN



Fyrehalt Evolution concertina fire curtains have been fire tested in accordance with AS1530.4 – 2014 for fire ratings up to -/120/-.

Manufactured locally in New Zealand, the Fyrehalt – Evolution fire curtain/shutter is highly reliable and is made using a continuous overhead drive system and proprietary controls to prevent out of sync operation over massive spans.

Ideal for protecting openings in floor slabs, the Fyrehalt – Evolution can be installed in a multitude of configurations and shapes including rectangles, polygons and curves, and it can zig-zagging across a building from one side to the other.

Fyrehalt Evolution can be installed in unlimited sizes consisting of 20 x 4m (max) legs.

- Fire tested in accordance with AS1530.4:2014
- Fire Ratings up to -/120/- FRR
- Polygon shapes of many sides can be created (closed systems)
- The system can zig-zag across a space and terminate against a wall at each end using proprietary galvanised side guides (open systems)
- The system can be installed in a straight line, as an 'L' shape and as a 'C' shape
- Gravity fail safe operation
- Ideal for medium to very large openings



**SMOKE**  
CONTROL



## FYREHALT EVOLUTION Fire+Smoke Concertina Curtain

### I INTRODUCTION

Fyrehalt Evolution fire curtains/shutters are made in our own ISO9001 Accredited facility using only high quality components.

The system consists of a headbox, bottom bar/tray and curtain fabric.

### I COMPLIANCE

Fyrehalt Evolution can be supplied, installed and certified for fire ratings up to -/120/- in accordance with AS1905.2 Fire Shutters and AS1530.4 Fire Test Methods. When installed as a closed system the permeability of the fabric provides a good indication of the air (smoke) leakage through the system.

Fyrehalt Evolution also bears the Warnock Hersey Mark. The Warnock Hersey Mark (WH) signifies that our manufacturing sites undergo periodic and independent 3rd party inspections to ensure ongoing compliance with fire test approvals. The WH Mark is the world's largest product compliance scheme and provides our customers with total surety by eliminating product and component substitution.



**Smoke Control is the only manufacturer and supplier of fire & smoke curtains whose products have been accredited under this scheme outside of the USA, providing many customers around the world, total assurance in our company and products.**

TARGET	PERFORMANCE DATA	RESULTS
FIRE PROTECTION	Fire Shutter	Complies with AS1905.2
	Fire Rating	-/120/- Sm in accordance with AS1530.4
	Radiant Heat	<12.57 kW/m <sup>2</sup> @ 500mm and 30 minutes into the Standard Fire Test (ISO834/AS1530.4)
	Smoke Performance	<25m <sup>3</sup> /hour when installed as closed system. When installed as an open system additional calculations are required.
	Permeability	<25m <sup>3</sup> /hour when (fabric only) tested in accordance with EN12101.1
SMOKE PROTECTION	Spread of Flame	0, 0, 0, 2 when tested in accordance with AS1530.3
	Group Number	Group 1 when tested in accordance with AS3837
	Cycle Test	Greater than 500 open-close cycles
FUNCTIONALITY	Operating Speed	160mm/sec (nominal)
	Maximum Pressure Differential	40Pa when fully deployed (closed system). Higher pressures are possible, however require design input by Smoke Control.
	System Weight	45kg per m of width
	Maximum Sizes	20m max width per individual 'leg' x infinite legs; 4m max drop

### What you need to know

All sorts of shapes are possible with this system, without the need for corner posts. Ask us how!

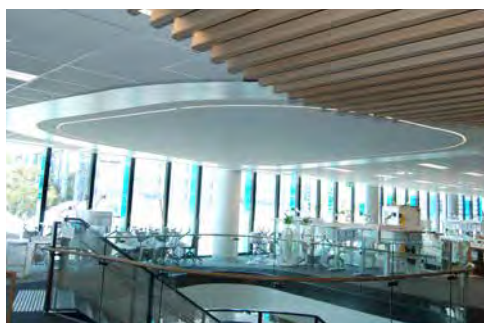
## APPLICATIONS

Ideal for medium to very large openings, Fyrehalt Evolution can be used to provide fire and smoke compartmentation in:

- offices
- vertical schools
- hospitals
- airports
- interconnecting stairs
- light wells
- and more...



| Fyrehalt – Evolution enclosing a light well



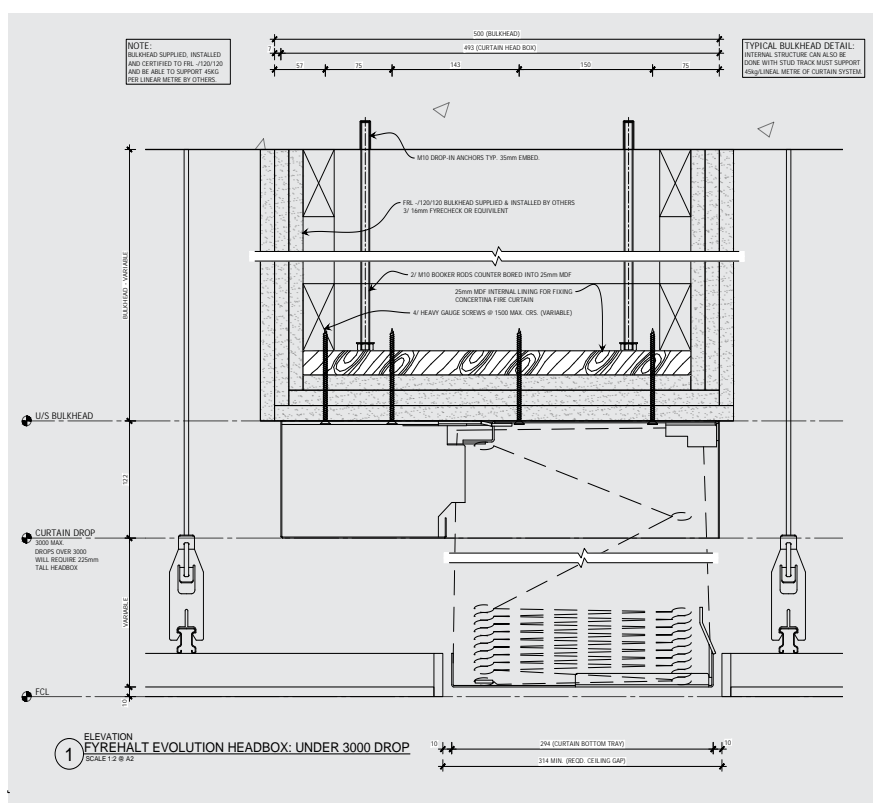
| Fyrehalt – Evolution bottom covers follow the curves of the ceiling when in standby mode

## ACCESSORIES

- bottom bar cover
- battery backup
- rewind switches
- sounders & strobes
- curtain applied signage
- staged deployment

## PRODUCT DIMENSIONS

| Headbox Section





## FYREHALT EVOLUTION Fire+Smoke Concertina Curtain

### I FUNCTION



#### SYSTEM OPERATION

The system is typically in the open position during normal building use. On receipt of an alarm, Fyrehalt - Evolution fire shutters deploy to provide fire and smoke compartmentation. On reset of the Fire Indicator Panel, the system automatically rewinds back into the standby position.

The control system has an inbuilt monitoring system to prevent any damage on rewind should any failures occur,

protecting your life safety asset. The control systems consists of a master control connected to individual motor control units. The controls require a standard 240V, 10A power supply to each box and a single alarm signal in the form of a normally closed dry contact to the master control. A localised smoke or heat detector may also be used to activate the system. Contact our technical department for details on 1300 665 471. The master control system offers staged deployment as a no-cost option.

#### EGRESS

When Fyrehalt - Evolution fire shutters are used as part of the egress strategy, rewind switches can be connected directly to the master control box. The switches can be mounted on one or both sides of the wall. Once pressed the system will retract and then redeploy. The retraction is based on a timer. This timer can be set to open the curtain to a minimum height before redeployment. The rewind system is supplied standard with a battery back up for operation during mains power failure.

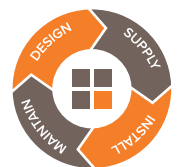
#### INSTALLATION

In line with Smoke Control's mission to provide customers with reliable solutions, the Fyrehalt - Evolution system is installed by our fully trained and approved installer network.

#### MAINTENANCE

As with all Essential services Fyrehalt - Evolution should be maintained in strict accordance with our documented procedures by fully trained and competent technicians. Operational tests alone are not considered adequate and when conducted by inexperienced personnel, may lead to damage of the product. Smoke Control offers a comprehensive preventative maintenance program which has proven costs savings over the life of the product.

Please contact our maintenance department for details on 1300 665 471.







## GENERAL INFORMATION

### I TECHNICAL SUPPORT



Smoke Control offers obligation free technical support and pricing throughout your design and documentation stage so you can accurately prepare your budgets through value engineering.

You can also download the set of specifications, drawings and technical data from our website [www.smokecontrol.com.au](http://www.smokecontrol.com.au).

Contact our technical department to discuss your project requirements, or feel free to arrange a meeting.

Australia  
1300 655 471

International  
+61 2 96814000

New Zealand  
+64 9 300 1981

### A LITTLE MORE ABOUT US...

Smoke Control was established in 2003. We partner with leading local and international organisations to work with the new performance-based design environment - in addition to the traditional prescriptive environment - designing and installing systems to meet the challenging fire and smoke control demands of modern buildings.

Constant research and development continue to enhance our offering of fire windows, fire shutters and fire & smoke curtains, bringing the most innovative technology to both regular and unique project challenges. If you cannot find what you are looking for, please contact our team as we may already have a solution for you.

Smoke Control services all regions in Australia and New Zealand via our own offices and people. International customers can contact our Australian office by phone or email for your nearest distributor.

*We believe people deserve to work & live  
in safe & beautiful buildings*

